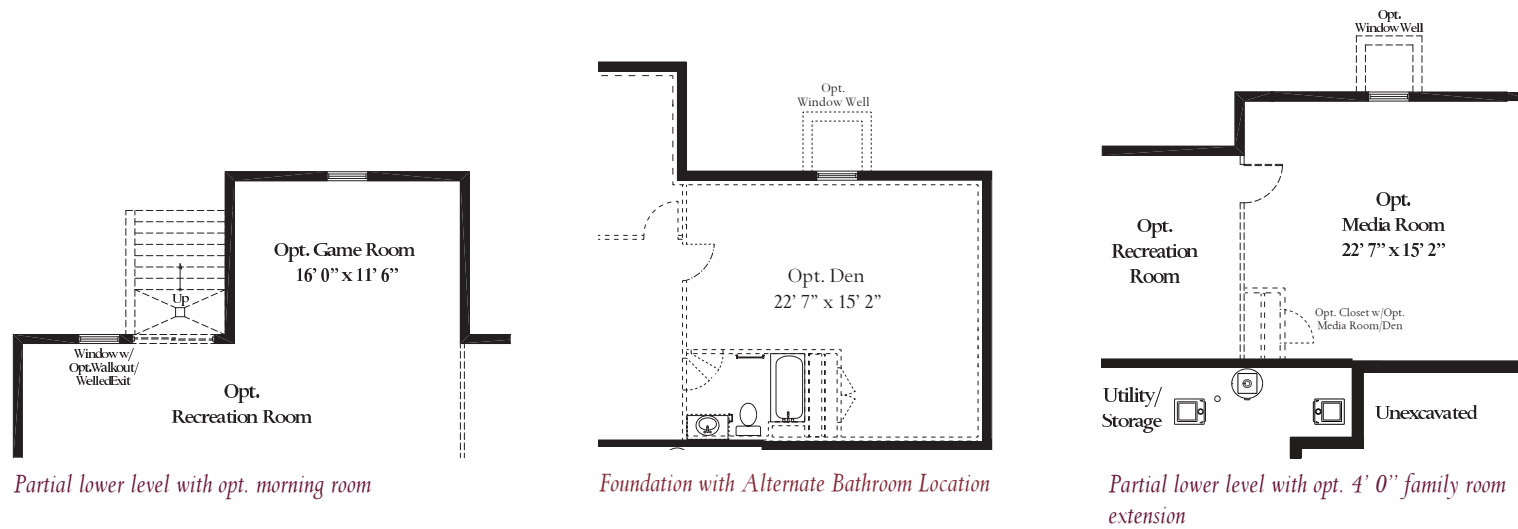


# The Chelsey



{ Elevation 1 Craftsman }



{ Elevation 1 with Stone to Grade }



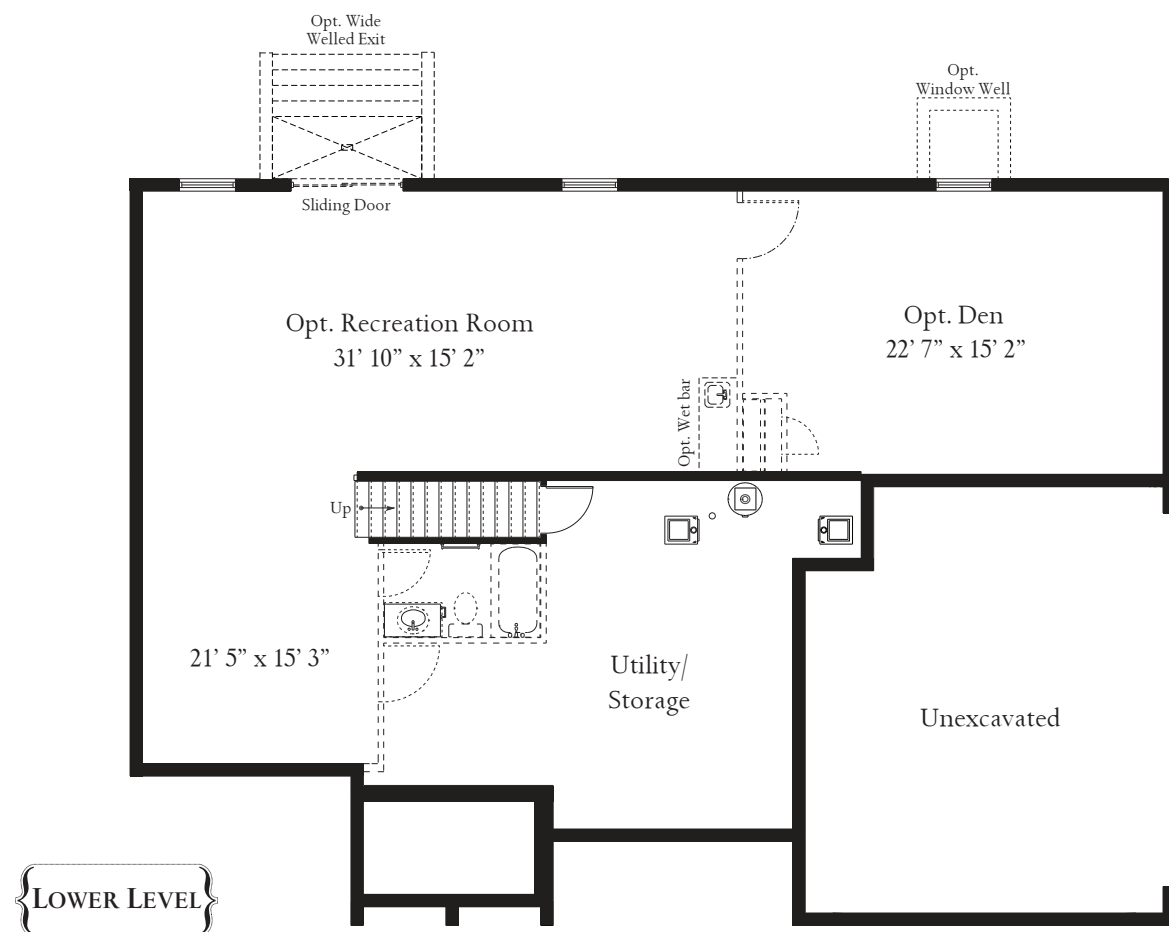
{ Elevation 2, Stone to Grade }



{ Elevation 3, Partial Stone }



{ Elevation 5, Stone Water Table, Dormers, Side Load Garage }



You will find charm everywhere you look in The Chelsey, beginning with a sunlit 2-story foyer that introduces the main level of the home. A private library sets itself apart, while the living room flows directly into the elegant dining room. At the back of the home, the well-appointed kitchen and breakfast nook open to a spacious family room. Upstairs, the palatial owners suite features dual walk-in closets and light-filled garden bath with separate shower, soaking tub, and dual vanities. Elevation Drawings show Optional Features.

**ATLANTIC BUILDERS**  
GIVING YOU MORE



**ATLANTIC BUILDERS**  
GIVING YOU MORE

